



AMAZING OPPORTUNITY FOR INDUSTRIAL DEVELOPMENT AND MANUFACTURING



PRIME INDUSTRIAL LAND SELLING NOW!

Located in one of the most productive agricultural areas in NSW, the Central West Industrial Park and Landrace Industrial Estate are the business gateways to the Mid-Lachlan Region. Both estates offer businesses prime land and services for ease of operations in the north Forbes area. Both locations boast unmatched logistics benefits through strategic placement at the crossroads to the nation, adjacent to the busy Newell Highway and the nearby Intermodal Hub. Offering convenient access to key business and employment areas, such as Forbes, Parkes, Condobolin, West Wyalong, Orange and Dubbo, the estates are suitable for a variety of users including agriculture, manufacturing, logistics, warehousing, storage and research.

With over \$40 million worth of development approved since the start of 2019 in the Forbes Region, Central West is the best address to do business.



MAJOR TRANSPORT ROUTES



To express your interest please contact Council's Manager Property and Investment on 02 6850 2300 and we'll share the Easy to Do Business Program with you, to help you set up your business for success.

FOR SALE CENTRAL WEST INDUSTRIAL PARK

56 Back Yamma Road, Forbes*	Lot 126	21100 square metres	Water, Power, Data, Telecommunications
1 New Road, Forbes*	Lot B	18500 square metres	Water, Power, Data, Telecommunications
3 New Road, Forbes*	Lot C	19000 square metres	Water, Power, Data, Telecommunications
5 New Road, Forbes*	Lot D	19000 square metres	Water, Power, Data, Telecommunications
7 New Road, Forbes*	Lot Z	20000 square metres	Water, Power, Data, Telecommunications
2 New Road, Forbes*	Lot V	18000 square metres	Water, Power, Data, Telecommunications
4 New Road, Forbes*	Lot W	18000 square metres	Water, Power, Data, Telecommunications
6 New Road, Forbes*	Lot X	18000 square metres	Water, Power, Data, Telecommunications
8 New Road, Forbes*	Lot Y	18000 square metres	Water, Power, Data, Telecommunications
58 Angus Clarke Drive, Forbes*	Lot 119	48300 square metres	Water, Power, Data, Telecommunications
62 Angus Clarke Drive, Forbes*	Lot T	61000 square metres	Water, Power, Data, Telecommunications
66 Angus Clarke Drive, Forbes*	Lot O	18900 square metres	Water, Power, Data, Telecommunications
68 Angus Clarke Drive, Forbes*	Lot P	18000 square metres	Water, Power, Data, Telecommunications
70 Angus Clarke Drive, Forbes*	Lot Q	18000 square metres	Water, Power, Data, Telecommunications
71 Angus Clarke Drive, Forbes*	Lot R	18000 square metres	Water, Power, Data, Telecommunications
74 Angus Clarke Drive, Forbes*	Lot S	18600 square metres	Water, Power, Data, Telecommunications
61 Angus Clarke Drive, Forbes*	Lot K	20000 square metres	Water, Power, Data, Telecommunications
61 Angus Clarke Drive, Forbes*	Lot L	20000 square metres	Water, Power, Data, Telecommunications
65 Angus Clarke Drive, Forbes*	Lot M	20000 square metres	Water, Power, Data, Telecommunications
67 Angus Clarke Drive, Forbes*	Lot N	21700 square metres	Water, Power, Data, Telecommunications
69 Angus Clarke Drive, Forbes*	Lot G	20000 square metres	Water, Power, Data, Telecommunications
2 Doyle Street, Forbes*	Lot H	20000 square metres	Water, Power, Data, Telecommunications
4 Doyle Street, Forbes*	Lot I	20000 square metres	Water, Power, Data, Telecommunications
6 Doyle Street, Forbes*	Lot J	23400 square metres	Water, Power, Data, Telecommunications
9 Doyle Street, Forbes*	Lot E	20000 square metres	Water, Power, Data, Telecommunications
11 Doyle Street, Forbes*	Lot F	20000 square metres	Water, Power, Data, Telecommunications

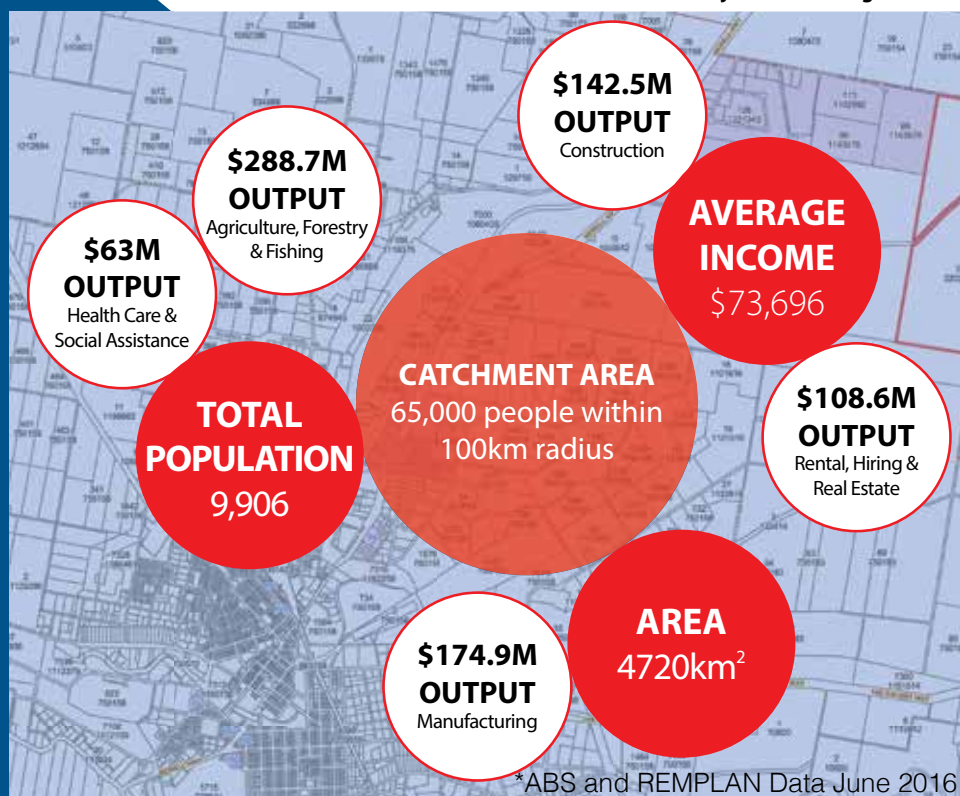
* Subject to Land Registration

Prominently positioned on the busy Newell Highway half way between Melbourne and Brisbane.

Freight transport is set to dramatically increase in the Central West from 15 million tonnes to 25 million tonnes per annum by 2034.

Ease of access to utilities, electricity, natural gas and alternate energies, and a good water supply.

Nearby to the Central West Livestock Exchange, a state of the art facility and Australia's largest under cover cattle and sheep selling centres.



CONTACT US TODAY!

Council's Manager Property and Investment on

02 6850 2300